

# (Technical)

Document No. : MJL-LD-AN-1

Author: [cwyang@mjl.co.kr]

Version: 1.1

Date: 2000 1 31

Subject: ByteBlaster Cable JTAG MAX+plus  
II EPC2 Download ...

Altera FLEX APEX PLD Configuration Serial PROM EPC2 ISP (In-System Programmability) EEPROM Device JTAG  
EPC2 Writing

Personal Computer, MAX+plus II Software, ByteBlaster Cable, EPC2 Serial PROM

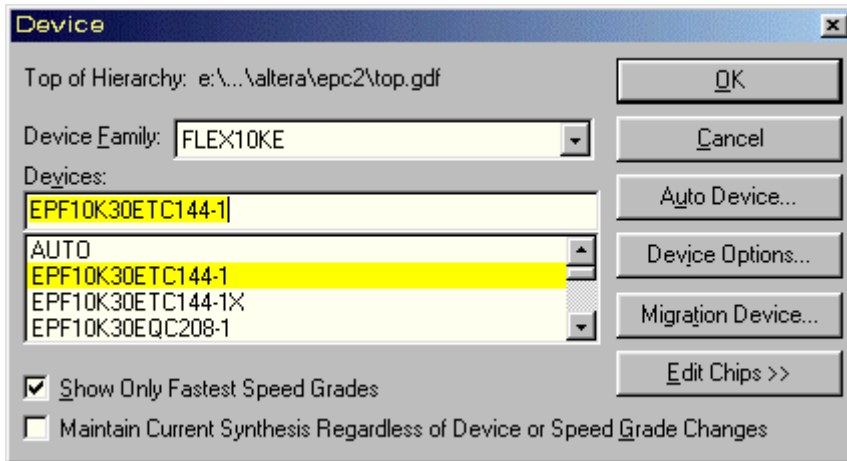
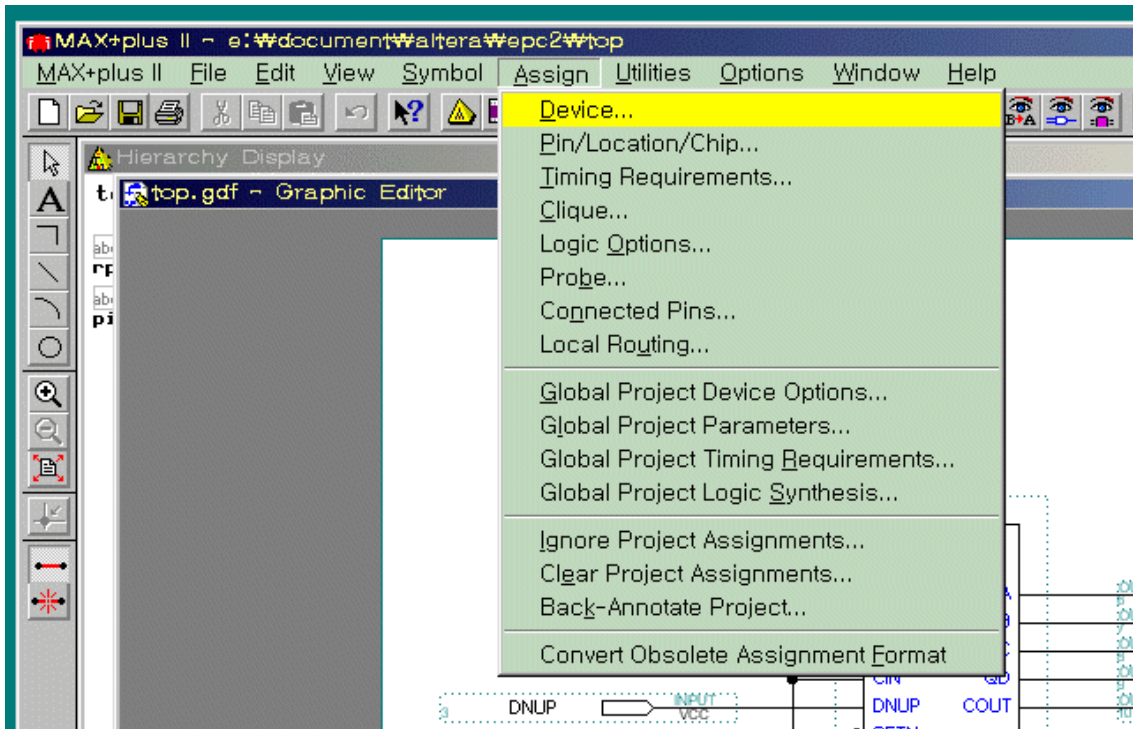
, Altera ByteBlaster Cable EPC2 JTAG  
2

- : AN 95 (In-System Programmability in MAX Devices), ver. 1.02, August 1999
- : <http://www.altera.com/document/an/an095.pdf>
- : AN 116 (Configuring APEX 20K, FLEX 10K & FLEX 6000 Devices), ver. 1.02, December 1999
- : <http://www.altera.com/document/an/an116.pdf>

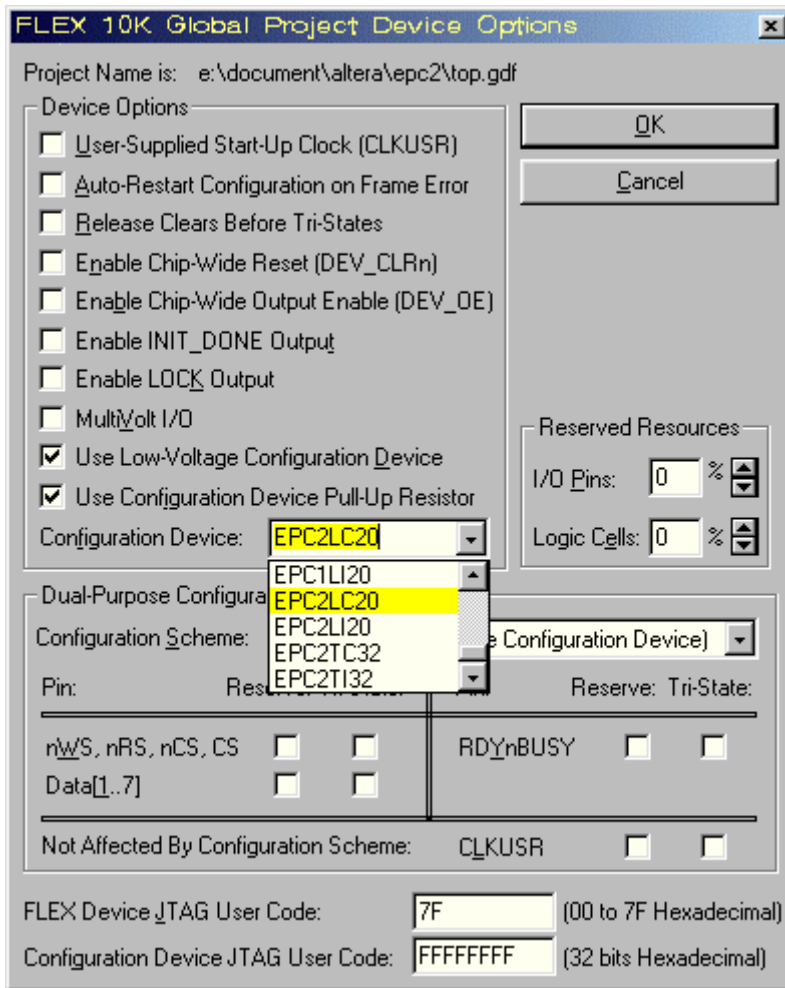
AN95 ISP 가 MAX Device  
Cable  
AN116 EPC2 APEX, FLEX Device ...  
53 page ...  
가

## Device

MAX+plus II Target Device FLEX . (Assign Device)



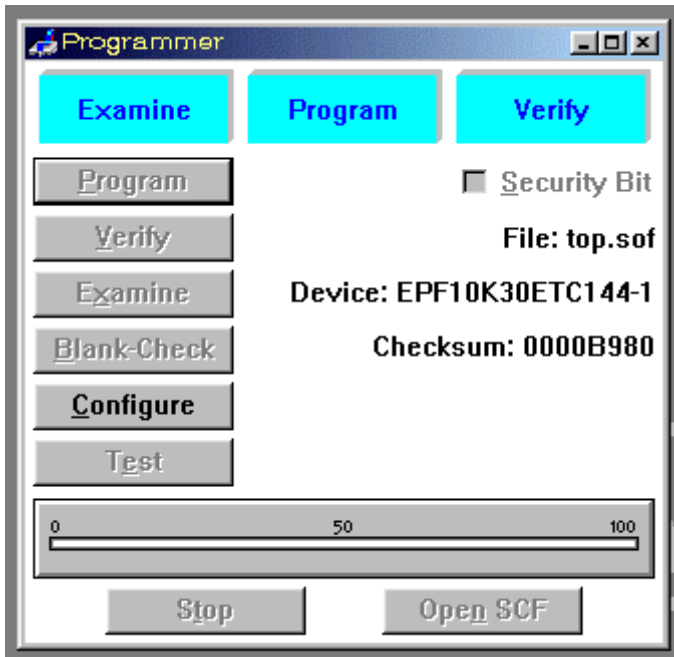
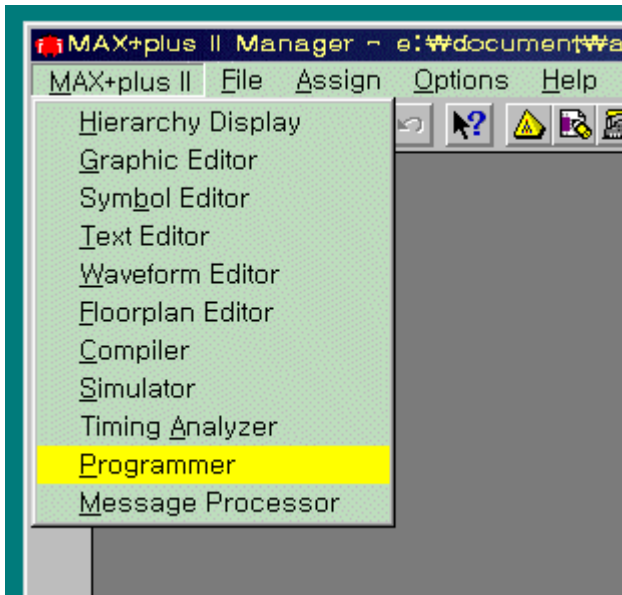
Assign Global Project Device Options... Configuration  
 Device PROM EPC2 OK



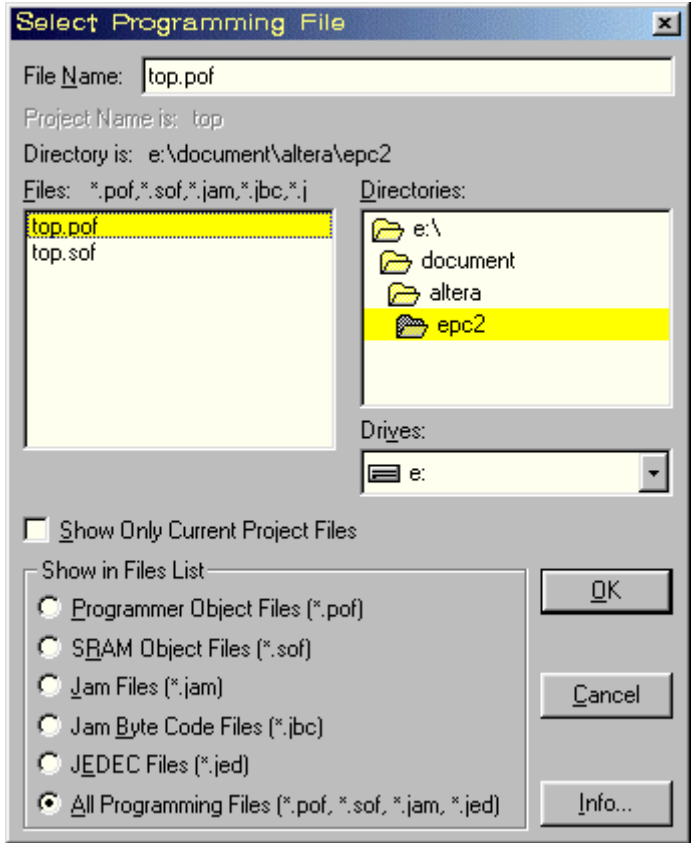
## Programming

Compile `<project name>.sof` `<project name>.pof`  
`<project name>.pof`

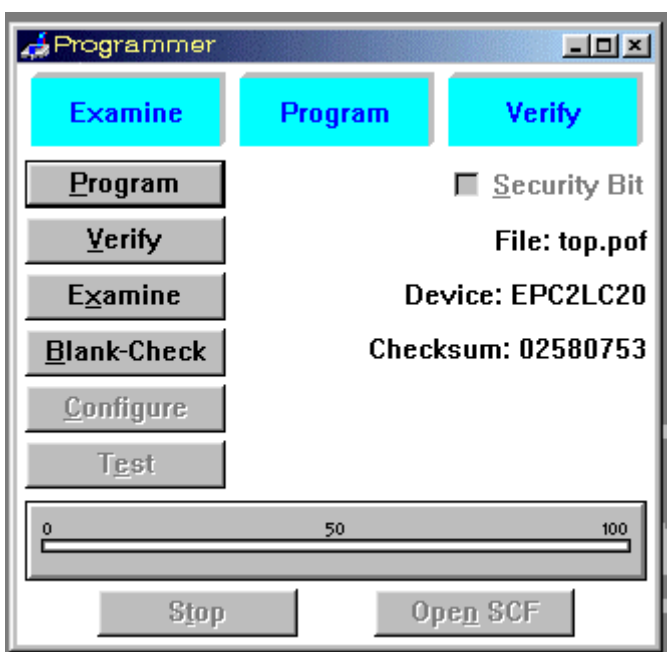
MAX+plus II Programmer Programmer



Download <project name>.pof FLEX Device 가 , EPC2  
 File: top.sof .  
 name>.pof Select Programming File , <project  
 OK .



Programmer File: Device: 가



Program PC <project name>.pof ByteBlaster Cable EPC2  
 Download 가

## Revision History

---

- 2000-1-29 - Ver 1.0: Initialize Release...
- 2000-1-31 - Ver 1.1: AN116 가...